



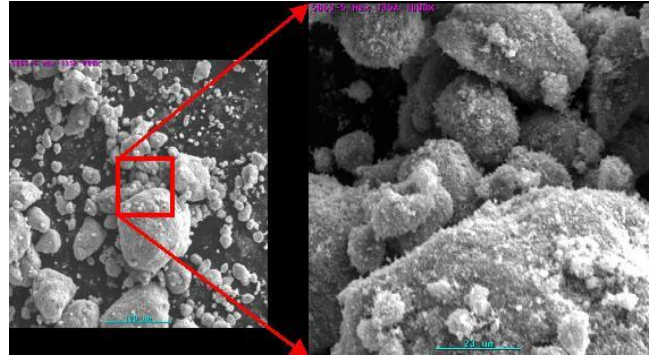
www.IAP.com

TITRIX®- Wear Resistant Titanium Powders

PARTICLE MORPHOLOGY:

Irregular or spherical.

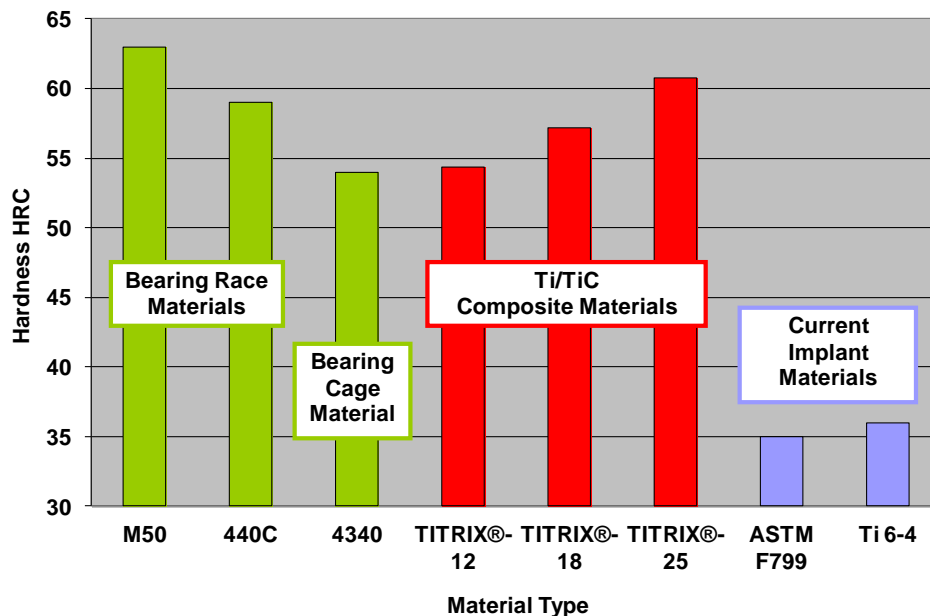
PARTICLE SIZE: Particle size distribution same as original titanium powder matrix selected.



TITRIX®- Nano TiC coated Ti matrix powders

HARDNESS/WEAR RESISTANCE:

Hardness and wear resistance in the range of tool steels and tunable by adjusting TiC weight %.



Ask for quote: TITRIX®- XX, where XX is weight % of TiC and XX= 1-25 wt.%